

Taxa, turnover and taphofacies: a preliminary analysis of facies- assemblage relationships in the Ediacara Member (Flinders Ranges, South Australia)

L. Reid^{a*}, J. Holmes^b, J. Payne^a, D. García-Bellido^{b,c}, and J. Jago^a

^a School of Natural and Built Environments, University of South Australia, Mawson Lakes, South Australia; ^b School of Biological Sciences, University of Adelaide, North Terrace, Adelaide, South Australia; ^c South Australian Museum, North Terrace, Adelaide, South Australia

*corresponding author: lily.reid@mymail.unisa.edu.au

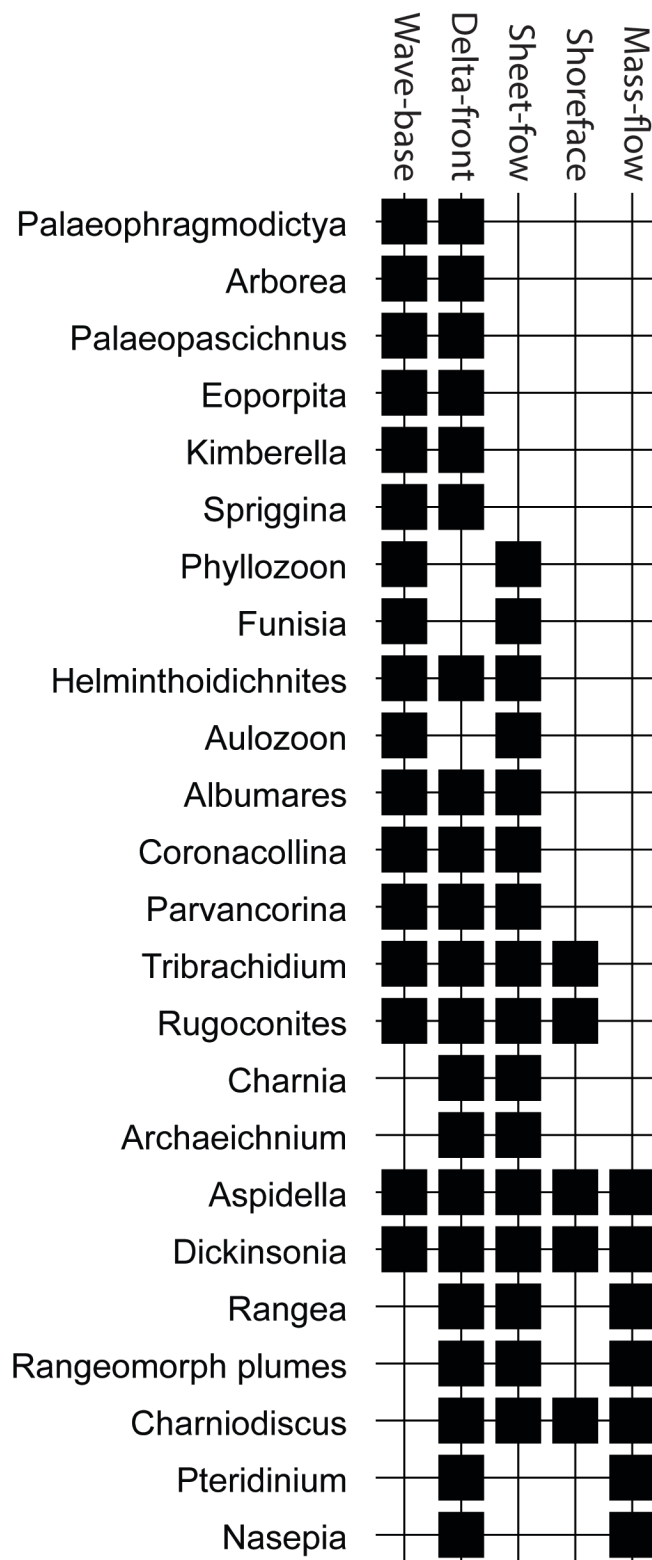
SUPPLEMENTARY PAPERS

Australian Journal of Earth Sciences (2019), 66,
<https://doi.org/10.1080/08120099.2018.1488767>

Copies of Supplementary Papers may be obtained from the Geological Society of Australia's website (www.gsa.org.au), the Australian Journal of Earth Sciences website (www.ajes.com.au) or from the National Library of Australia's Pandora archive (<https://pandora.nla.gov.au/tep/150555>).

Supplementary paper

Appendix 1. Unconstrained seriation plot of Ediacara biota taxa and facies. Note placing of Shoreface facies between Sheet-flow and Mass-flow facies.



Appendix 1. Unconstrained seriation plot of Ediacara biota taxa and facies. Note placing of Shoreface facies between Sheet-flow and Mass-flow facies.